

FRONT LOWER CONTROL ARM

- Equipped with harden rubber bushing
- Improve the accuracy of control
- Provides stability
- increase steering response
- One-piece, OE design



#7544 FRONT LOWER CONTROL ARM

FRONT LOWER CONTROL ARM PARTS



#7544 FRONT LOWER CONTROL ARM



#7502-A BUSHING-BIG HARDEN RUBBER



#7653 OE TYPE BALL JOINT



#7502-B BUSHING-SMALL HARDEN RUBBER

HARDEN RUBBER BUSHING

- Increasing the life span
- Viscosity between rubber and metal is about 2000kgs
- The durometer of bushing is about 70 degree
- Improve the stability and steering response
- Dramatically improving handling performance

REAR TRAILING ARM BUSHING	6305	2PCS/SET
REAR LOWER ARM BUSHING	6631	4PCS/SET
REAR FRONT TOE BUSHING	6632	4PCS/SET
REAR UPPER ARM BUSHING	6633	4PCS/SET

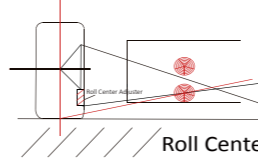


RC BALL JOINT ANSD AJUSTER

- Suitable for lowered car, roll center adjust function
- Correct the suspension geometry
- Putting the control arms back closer to its original position
- Improves tire contact patch with the road
- Camber adjuster function



#7651 RC ADJUSTER ADD 20mm. CAMBER ADJUSTMENT



Roll Center Adjust



#7652 RC BALL JOINT 10mm HEIGHT ADDED



#7651 RC CAMBER ADJUSTER 20mm HEIGHT ADDED



#7274 RC TIE ROD END

REINFORCED ENGINE MOUNT

- Create more strength than OE rubber mounts
- Reduce engine move significantly
- Reduce the vibration
- Provide the maximum output under engine acceleration



#6663 RIGHT SIDE ENGINE MOUNT



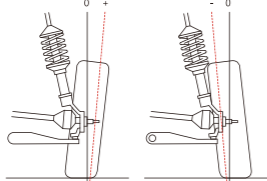
#6707 REAR SIDE ENGINE MOUNT



FORD FOCUS MK III

REAR CAMBER KIT

- Superior strength and durability
- Camber adjust function
- Durometer of bushing is 150% harder than OE ones
- Equipped with harden rubber or pillow ball bushing, improve handling
- Increased stability during cornering and acceleration



Positive and negative camber adjust



#6457-S HARDEN RUBBER TYPE



#6457 HARDEN RUBBER TYPE



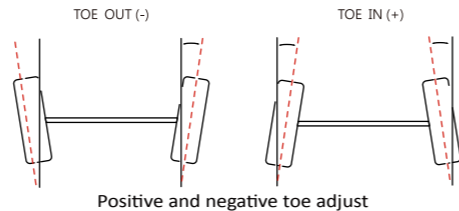
#6467 PILLOW BALL TYPE



#6897 PILLOW BALL & HARDEN RUBBER TYPE

REAR TOE ARM

- ED process and painting for the highest durability
- Toe adjust function
- Direct bolt on designed
- Equipped with harden rubber or pillow ball bushing



Positive and negative toe adjust



#6410-S HARDEN RUBBER TYPE



#6319-S PILLOW BALL TYPE



#6898 PILLOW BALL & HARDEN RUBBER TYPE

REINFORCED SWAY BAR

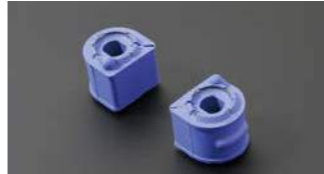
- OE design, direct bolt on
- Hollow internal structure, lighter and flexible
- Correction of under or oversteer
- Improve more grip and better handling
- keep cars flat in turns instead of leaning over to one side



- #7739 FRONT SWAY BAR - 25.4mm
- #7740 REAR SWAY BAR - 22mm
- #7741 ST FRONT SWAY BAR - 28mm
- #7742 ST REAR SWAY BAR - 25.4mm



STABILIZER BUSHING



#7704 REINFORCED STAB. BUSHING OE TYPE 22mm

- 100% closely to fit sway bar
- Provides stability
- Improve solid response
- OE design

REINFORCED STABILIZER LINK

- Special boot & ball joint design, highest durability
- More direct energy transfer and feel
- OE design, east to install
- Improve sway bar stability
- Adjustable function



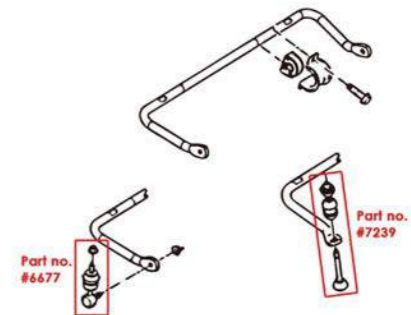
#7656-300 FRONT ADJUSTABLE STAB. LINK Range: 280-319mm



#7239 REAR STAB. LINK



#6677 REAR STAB. LINK



#6611 FRONT STAB. LINK OE DESIGN 305mm

