

Installation Instructions

安裝說明書

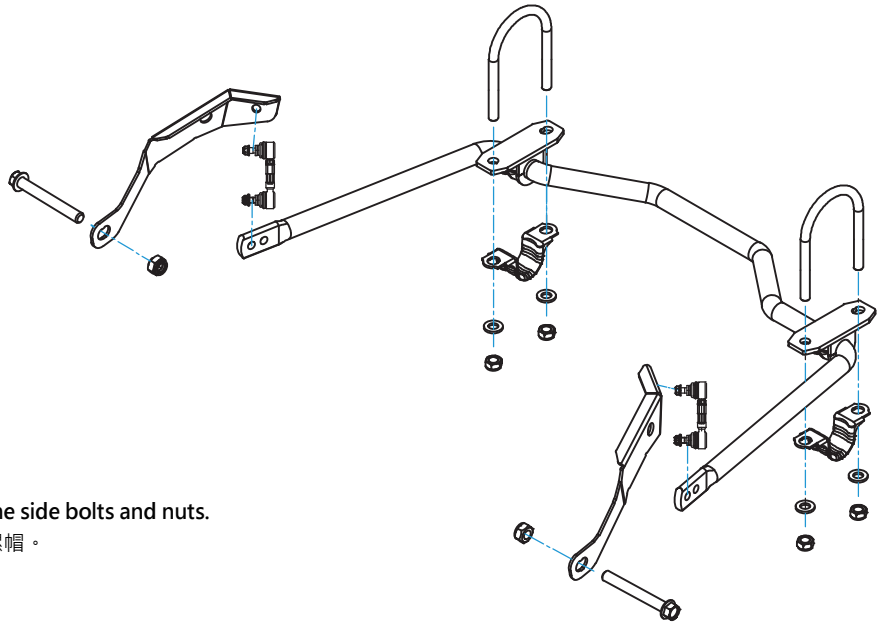
REAR ADD-ON SWAY BAR

後加裝型防傾桿

#Q1211/Q1212

Components 內含配件

- ① Sway bar 防傾桿.....1pcs
- ② Sway bar bushing 防傾桿橡皮.....2pcs
- ③ Bushing mounting plate 橡皮固定底座.....2pcs
- ④ Bushing bracket 橡皮固定環.....2pcs
- ⑤ U-bolt U形螺絲.....2pcs
- ⑥ Nut-Nyloc 螺帽-尼龍 (M12x1.25-19x12).....4pcs
- ⑦ Washer 華司 (24x13x2.6).....4pcs
- ⑧ End link bracket-RH 李仔串支架-右.....1pcs
- ⑨ End link bracket-LH 李仔串支架-左.....1pcs
- ⑩ End link 防傾桿連接桿/李仔串.....2pcs
- ⑪ Bolt-Flange 螺絲-凸緣 (M14x1.5x110).....2pcs
- ⑫ Nut-Nyloc 螺帽-尼龍 (M14x1.5-22x14).....2pcs



Instructions 安裝說明

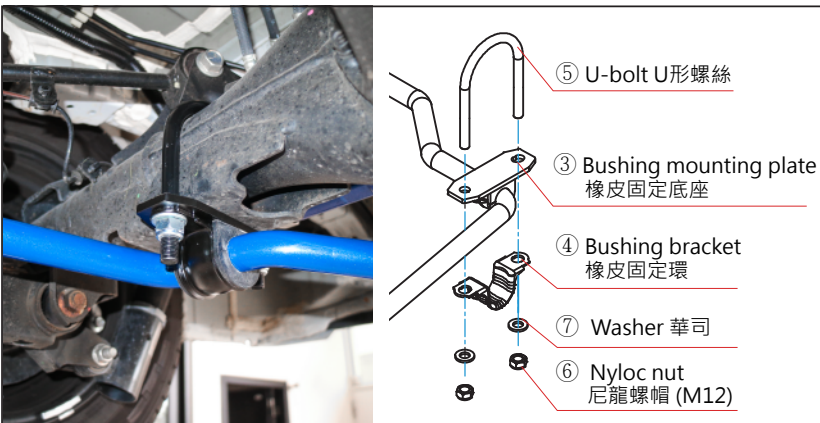
1. Remove the factory rear upper and lower arms frame side bolts and nuts.
拆下原車後懸吊上連桿及下連桿連接車體端的螺絲及螺帽。
2. Install ⑧ & ⑨ End link brackets to the vehicle.
將 ⑧ & ⑨ 左右李仔串支架 安裝至車輛。
3. Reinstall the upper & lower arm bolts and nuts to secure the brackets.
將連桿螺絲鎖回車輛以固定支架。



5. Install ⑩ End links to connect the sway bar and end link brackets.
安裝 ⑩ 李仔串 · 將防傾桿連接至兩側固定支架鎖點。



4. Install ① Sway bar to the rear axle using the following items.
使用以下圖配件 · 將 ① 防傾桿 安裝至後輪軸



Caution 注意事項

- Installation is recommended to be performed by licensed mechanics with necessary tools to ensure safety. Incorrect installation may cause injury, damage to the product or vehicle.
安裝建議由合格的技師及工具執行以確保安全 · 安裝錯誤可能對人員、產品及車輛造成傷害。
- Note the routing of wires and cables before installation, or please refer to factory manual.
安裝前請事先記下線路的安裝路徑及位置以維持原廠配置 · 有疑問時請參考原廠手冊。

- Tighten bolts and nuts firmly by using handtools, and with specified torque if mentioned.
安裝過程請使用手動工具確實鎖緊螺帽及螺絲 · 如有特別註明請依照說明指示的扭力上鎖。