

Installation Instructions

安裝說明書

FRONT TRACK BAR RELOCATION BRACKET

前橫連桿墊高座

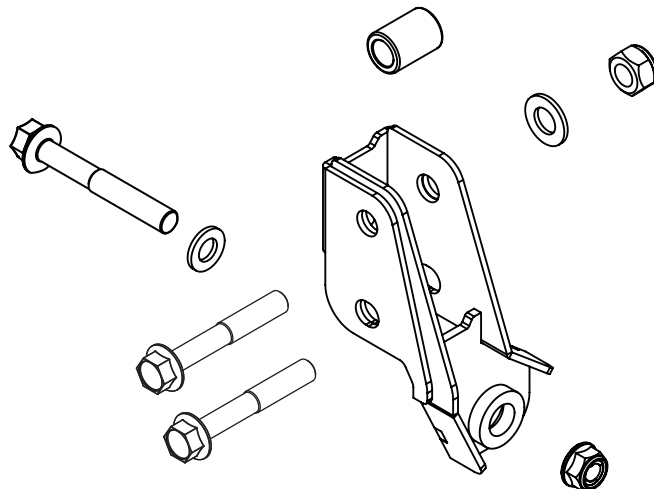
#Q0783

Application 適用車型

Suzuki Jimny 4th '18-

Components 內含配件

- | | |
|-------------------------------|------|
| ① Bracket 增高座本體..... | 1pcs |
| ② Tube shield 鐵套管墊片..... | 1pcs |
| ③ Bolt 螺絲 (M12x1.25x100)..... | 1pcs |
| ④ Nut 螺帽 (M12x1.25)..... | 1pcs |
| ⑤ Washer 華司(12M)..... | 1pcs |
| ⑥ Bolt 螺絲 (M14x1.5x80)..... | 2pcs |
| ⑦ Nut 螺帽 (M14x1.5)..... | 1pcs |
| ⑧ Washer 華司(14M)..... | 1pcs |

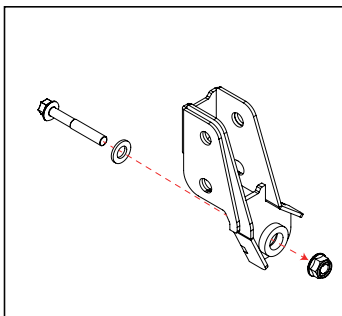


Caution 注意事項

- Installation is recommended to be performed by licensed mechanics with necessary tools to ensure safety. Incorrect installation may cause injury, damage to the product or vehicle. 安裝建議由合格的技師及工具執行以確保安全。安裝錯誤可能對人員、產品及車輛造成傷害。
- Note the routing of wires and cables before installation, or please refer to factory manual. 安裝前請事先記下線路的安裝路徑及位置以維持原廠配置。有疑問時請參考原廠手冊。
- Tighten bolts and nuts firmly by using handtools, and with specified torque if mentioned. 安裝過程請使用手動工具確實鎖緊螺帽及螺絲。如有特別註明請依照說明指示的扭力上鎖。

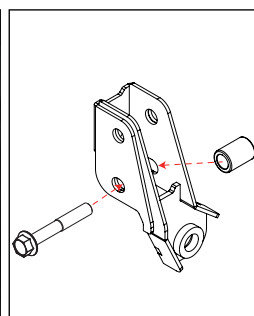
Instructions 安裝說明

1. Take down the Front radius arm front bolt. Install the M12x1.25x100 bolt and 12M washer go through the Front radius arm bushing. Screw in with the M12x1.25 nut. (Torque value: 100 N/m)
下支臂前端螺絲拆下安裝M12x1.25x100螺絲與12M華司，穿過下支臂前端鎖點安裝增高座並且和M12x1.25螺帽對鎖。(螺絲扭力 100 N/m)



2. Place the M14x1.5x80 hex head bolt at the bottom and place the tube shield on the middle of the bracket make sure the bolt go through. (Torque value: 100 N/m)

使用M14x1.5x80外六角螺絲安裝下方鎖孔，鐵套管安裝入下方位置螺絲鎖至原廠鎖點。(螺絲扭力 100 N/m)



3. Place the M14x1.5x80 hex head bolt at top of the bracket and make sure the rear panhard rod. Screw it in with 14M washer and M14x1.5 nut. (Torque value 120 N/m)
使用M14x1.5x80外六角螺絲穿過安裝前橫桿後面放置 14M華司及M14x1.5螺帽對鎖安裝。(螺絲扭力 120 N/m)

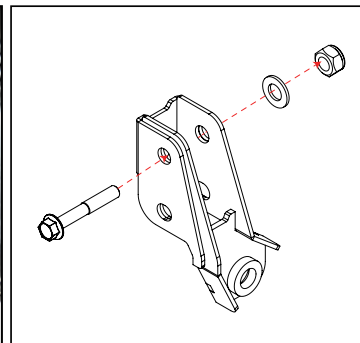


Illustration of installed state 安裝完成示意圖